



**Summary Report of Retention and Completion Rates
UGA First-Time Full-Time Freshman
Cohorts 2000 – 2010**

James M. Byars, M.Ed
Graduate Research Assistant
May 2012

Summary

This report summarizes the retention and completion rates for the first-time, full-time freshman cohorts at the University of Georgia from 2000 – 2010. Freshman cohorts are defined as first-time students who entered in the summer or fall terms for a specific year and were classified as full-time students during the fall term. Retention is defined as a student enrolled following the fall term; who matriculated into a professional program at UGA; or who graduated with a bachelor's degree. Completion is defined as a student graduated with a bachelor's degree or matriculated into a professional program at UGA (e.g. Pharmacy & Veterinary Medicine). Students are counted in the completion rates cumulatively through the summer term. Due to some smaller ethnic populations, comparisons on retention and completion rates between these sub-groups should be interpreted with caution.

The percentage of first-time, full-time freshman returning for their second year rose from 91.5% to 94.3% for the 2010 cohort (Table 1). The percentage of freshmen retained into the third year increased to 90.4% for the 2009 cohort from 84.9% during the same time (Table 1). The first- and second-year retention rates both decreased by slightly (.1%) from last year (Figure 1). 84.6% of the 2005 cohort was retained for six years which was up from 83.3% for the previous cohort and 79.7% for the 2000 cohort respectively (Table 1). UGA has improved its retention rates for all years (one to six years) since 2000 (Table 1). The four-year completion rate for the 2007 cohort was 57.7% which is up from 55.2% for prior cohort and 46.9% for the 2000 group (Table 2). 83.3% of the 2005 cohort completed within six years which was an increase from 81.6% for the 2004 cohort and 77.3% for the 2000 cohort (Table 1). Like the retention rates there has been an increase in the four-, five-, and six-year completion rates since 200 (Figure 2).

Tables 3 – 6 show retention and completion rates by gender and cohort year. The following are key points:

- For the 2010 cohort, males (94.8%) were retained into their second year at a slightly higher rate than female students (94.0%). Figure 3 illustrates that first-year retention rates for male students grew steadily since 2008 and surpassed the female student rate in 2010. During this time, female students experienced a steady decline in their first-year retention rates (Table 3).
- For second-year retention rates, female students have seen strong growth since 2007 while the male student rate has steadily declined. The 2009 female cohort (90.7%) were retained at a marginally higher rate than male students (90.4%) into their third-year (Table 3).
- Female students (85.0%) were retained better at the six-year mark than males (83.9%) for the 2005 cohort.
- Table 4 shows average retention rates by gender. Both female and male students saw increases in first-year and second-year average retention rates. However, males have higher average retention rates for first- and second-year rates. The average second-year retention rate for females has improved considerably while the male average has remained constant.
- Tables 5 and 6 show that female students have higher completion rates than males with the greatest difference at the four-year completion mark. The latest 6-year rates (2005 cohort) show that females (84.3%) had a 2.74% higher completion rate than males. Since the 2000 cohort, both male and female students have improved their six-year completion rate by roughly 6.0%; whereas, males have improved their four-year completion by 13.8% compared to female students by 8.4%.
- Table 6 shows the latest three- and six-year completion rate averages for female and male students. For the four, five, and six-year completion rates, both female and male students have improved their averages at a higher rate over the past three years when compared to three years prior. However, female students constantly have higher completion rates than male students for four-, five-, and six-year rates.

Tables 7 – 10 presents retention and completion rates by race, ethnicity, and cohort year.

- Only Asian (.3%), Hispanic (.7%), American Indian (11.1%), White (.5%), and Not-Reported (1.0%) student population increased their first-year retention rates between the fall 2009 and 2010 cohorts (Table

7). Black/American (3.2%) and Hispanic (3.3%) populations were the only students to improve the second-year retention rates between the fall 2008 and 2009 cohorts (Table 7).

- For the 2007 cohort, Asian (58.0%), White (58.5%), and Not-Reported (66.7%) had four-year completion rates higher than the total student average (57.7%). For the 2005 cohort, only Multi-Racial (84.9%) and White (83.3%) students had six-year completion rates better than the total student average (83.3%).
- Table 8 shows that Asian, Black/African-American, Hispanic, and American Indian students had higher three- and five-year first-year retention rate averages than the total student average; whereas, the largest student subpopulation, White/Caucasian, performed slightly lower across all averages. Only, Asian, Black/African-American, Multi-Racial, and Native Hawaiian – Pacific Islander students outperformed the second-year total student average retention rate for three and five year averages
- Table 10 shows that only Asian and White students had a higher three- and six-year average for four-year completion rates than the total student average. However, Asian, Hispanic, Multi-Racial, and White students outperformed the three and six year average for the six-year total student completion rate.

Tables 11 – 14 presents retention and completion rates by residency and cohort year.

- In general, in-state students had higher retention and completions rates than non-resident students regardless of citizenship.
- For the 2010 cohort, the difference in the first-year retention rate with respect to residency was 5.7% (95.0% for Georgia residents, 89.8% for non-residents). The previous difference was 5.5% for the 2009 cohort and 6.1% for the 2000 cohort (Table 2). The difference in second-year retention rates for the 2009 cohort was 8.2% (91.4% for Georgia residents, 83.2% for non-residents). The previous difference was 7.3% for the 2008 cohort and 3.0% for the 2000 cohort.
- Table 13 shows that non-resident students have higher four-year completion rates than resident students. However, resident student completed at a slightly higher rate at the six-year mark. The four-year completion rate for non-resident students increased by 2.9% (58% in 2006; 60.9% in 2007) and by 2.3% for resident students (54.8% in 2006; 57.1% in 2007). The six-year rate for non-resident students grew by 3.6% (82.9% in 2005; 79.3% in 2004) and by 1.3% for resident students (83.3% in 2005; 82.0% in 2004).
- Table 12 shows that resident students have substantially higher first- and second-year retention rates when looking at the latest three, five, and ten year averages than non-resident students. Table 14 shows that non-resident students have higher four-year average completion rates (both three and six year averages) with comparable, but slightly lower averages for five- and six-year completion rates.

Tables 14 – 18 present retention and completion rates by HOPE scholarship.

- Overall, the HOPE scholarship highly influences the University's overall retention and completion rates.
- Specifically, students receiving the HOPE scholarship during their first semester had four and six year retention and completion rates that were several percentage points higher than students not receiving the scholarship. In-state students without HOPE had notably lower retention and completion rates compared to out-of-state students without HOPE.
- Tables 16 and 17 shows the retention and completion rates for students depending on their receipt of the HOPE during their second year. This means that students could keep, lose, or gain (e.g. did not have HOPE during their first year) the HOPE scholarship. The data shows that students who kept HOPE exhibited higher rates compared to all other students. Students who gained the HOPE scholarship had comparable rates to students who kept HOPE. Students who lost the HOPE scholarship had the lowest retention and completion rates than students who never had HOPE.
- Table 18 shows completion rates with respect to the percentage of the student's college career with the HOPE scholarship. A student's completion rates are proportional to the percentage of a student's college career with the HOPE scholarship. Hence, more semesters with HOPE equates to higher retention and completion rates.

Table 1
Retention Rates by Cohort Year

Cohort	Fall Year 2	Fall Year 3	Fall Year 4	Fall Year 5	Fall Year 6	Fall Year 7
2000	91.5	84.9	82.3	79.5	79.2	79.7
2001	93.1	87.3	84.2	81.0	80.4	81.0
2002	93.3	87.5	85.1	82.3	81.4	82.2
2003	93.5	88.3	85.5	82.7	82.2	83.0
2004	93.6	88.1	85.6	82.7	83.0	83.3
2005	94.2	89.2	87.1	84.8	84.3	84.6
2006	93.2	89.0	87.2	83.9	83.8	
2007	93.6	89.2	87.7	84.3		
2008	94.5	90.5	87.9			
2009	94.4	90.4				
2010	94.3					

Figure 1
Retention Rates by Cohort Year

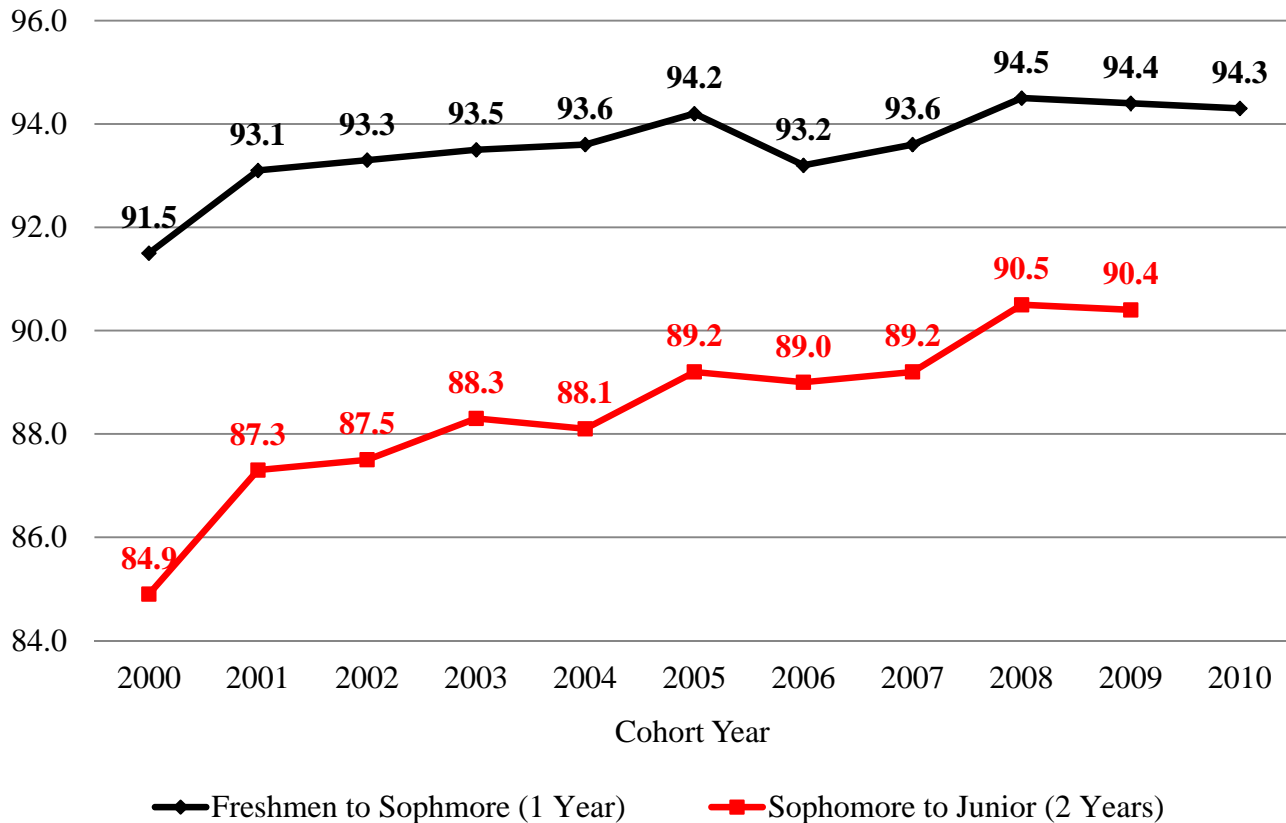


Table 2
Completion Rates by Cohort Year

Cohort	2 Years	3 Years	4 Years	5 Years	6 Years
2000	0.7	2.5	46.9	73.3	77.3
2001	0.5	2.6	49.2	74.8	78.7
2002	0.9	3.1	52.3	76.6	80.1
2003	0.7	2.9	51.2	76.8	80.8
2004	0.7	2.7	53.6	78.0	81.6
2005	0.7	2.6	55.3	79.4	83.3
2006	0.7	3.0	55.2	79.4	
2007	0.8	3.0	57.7		
2008	0.8	3.3			
2009	0.6				
2010					

Figure 2
Completion Rates by Cohort Year

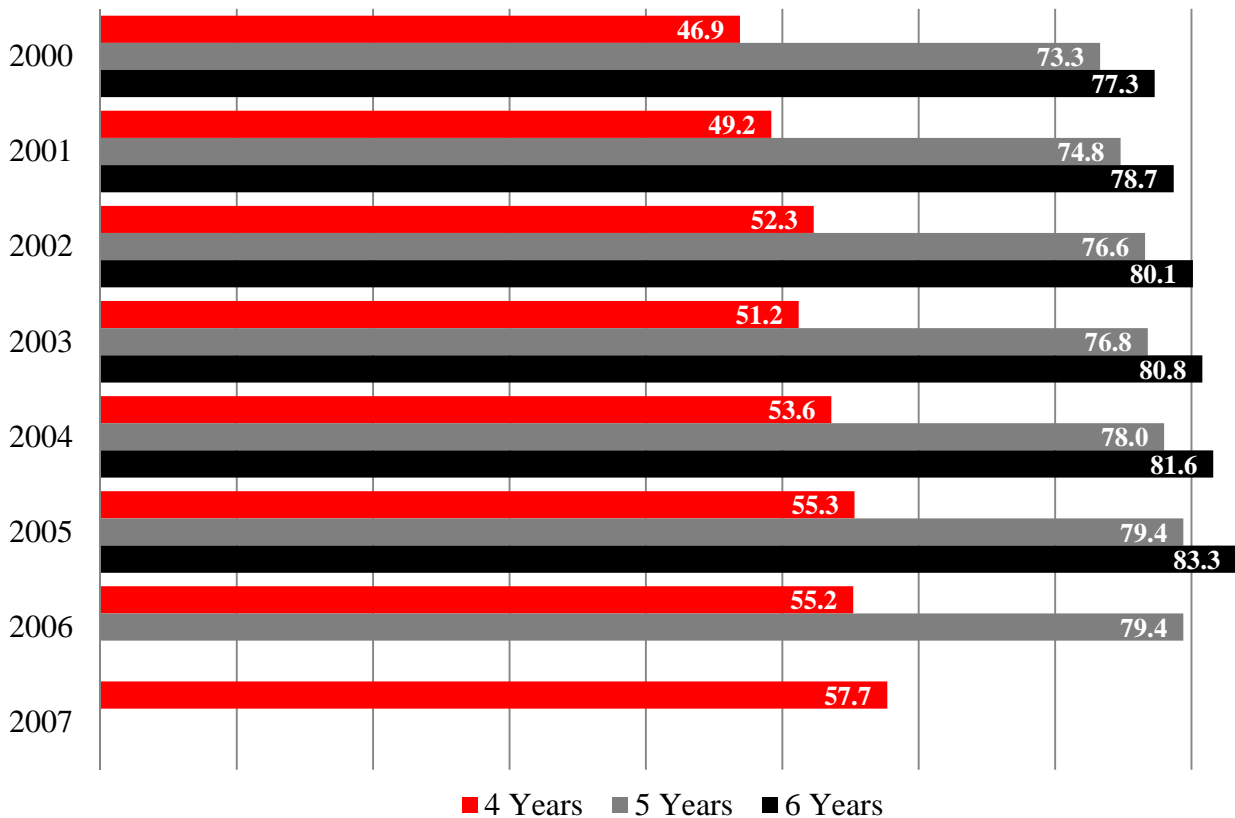


Table 3
Retention Rates by Gender and Cohort Year

Cohort	Gender	Students		Fall	Fall	Fall	Fall	Fall	Fall
		#	%	Year 2	Year 3	Year 4	Year 5	Year 6	Year 7
2000	Female	2542	60.5	91.8	84.9	82.3	79.7	79.7	80.0
	Male	1650	39.3	91.1	84.8	82.2	79.2	78.5	79.2
2001	Female	2640	59.3	93.5	86.9	84.4	81.5	81.4	82.3
	Male	1810	40.6	92.5	87.8	83.9	80.2	78.8	79.0
2002	Female	2559	59.8	93.0	86.7	83.9	81.4	81.0	81.7
	Male	1713	40.0	93.6	88.7	86.9	83.7	82.0	82.8
2003	Female	3089	59.9	93.3	88.0	85.0	82.3	82.2	83.0
	Male	2004	38.9	93.9	88.6	86.2	83.2	82.2	82.9
2004	Female	2726	60.6	93.3	87.7	85.1	82.8	83.5	83.6
	Male	1773	39.4	94.1	88.8	86.4	82.6	82.3	82.7
2005	Female	2811	60.4	93.7	88.6	87.1	85.0	84.8	85.0
	Male	1843	39.6	94.8	90.1	87.2	84.6	83.4	83.9
2006	Female	3160	62.5	93.0	88.1	86.1	83.2	83.5	
	Male	1898	37.5	93.6	90.3	88.9	85.0	84.1	
2007	Female	2935	62.8	93.3	88.5	87.1	84.0		
	Male	1733	37.1	94.1	90.4	88.9	84.8		
2008	Female	3011	63.0	94.7	90.6	87.9			
	Male	1765	36.9	94.1	90.2	87.9			
2009	Female	2860	61.2	94.5	90.7				
	Male	1813	38.8	94.3	90.1				
2010	Female	2886	61.8	94.0					
	Male	1781	38.2	94.8					

Table 4
Retention Averages by Year & Gender and Yearly Trends

	Retention to 2nd Year*			Retention to 3rd Year**		
	3 Year	5 Year	10 Year	3 Year	5 Year	10 Year
Female	94.4	93.9	93.6	89.9	89.3	88.1
Male	94.4	94.2	94.0	90.2	90.2	89.0
Total	94.4	94.0	93.8	90.0	89.7	88.4

* Cohorts: 2001 – 2010; ** Cohorts: 2000 – 2009

Figure 3
Freshmen to Sophomore Retention Rates by Gender and Cohort Year

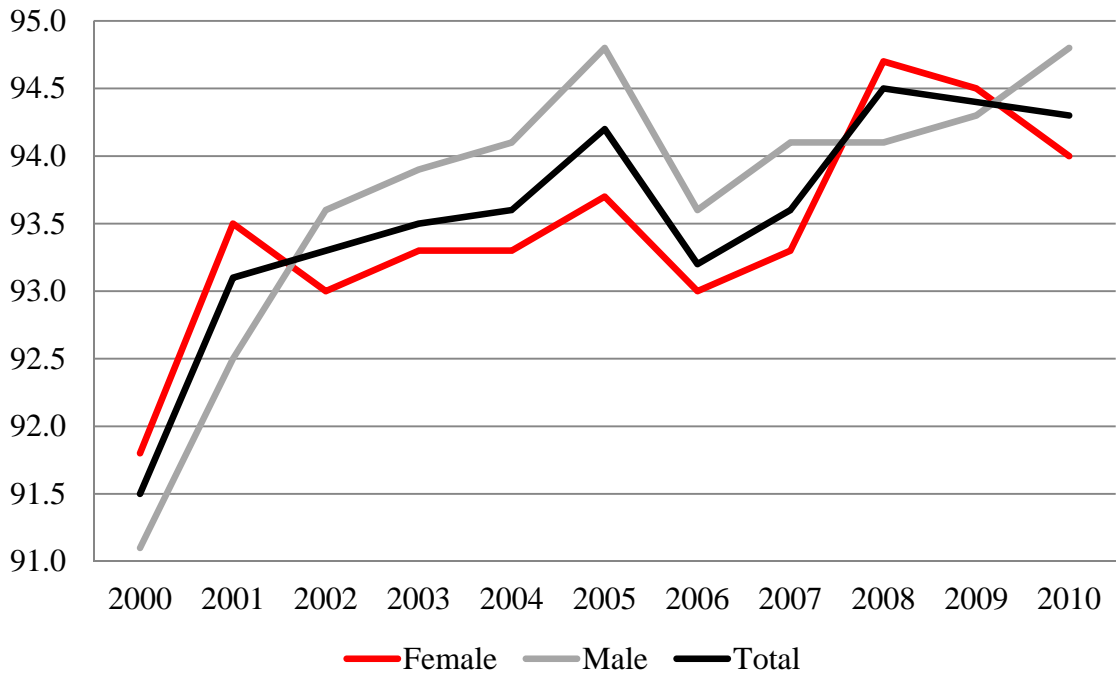


Figure 4
Sophomore to Junior Retention Rates by Gender and Cohort Year

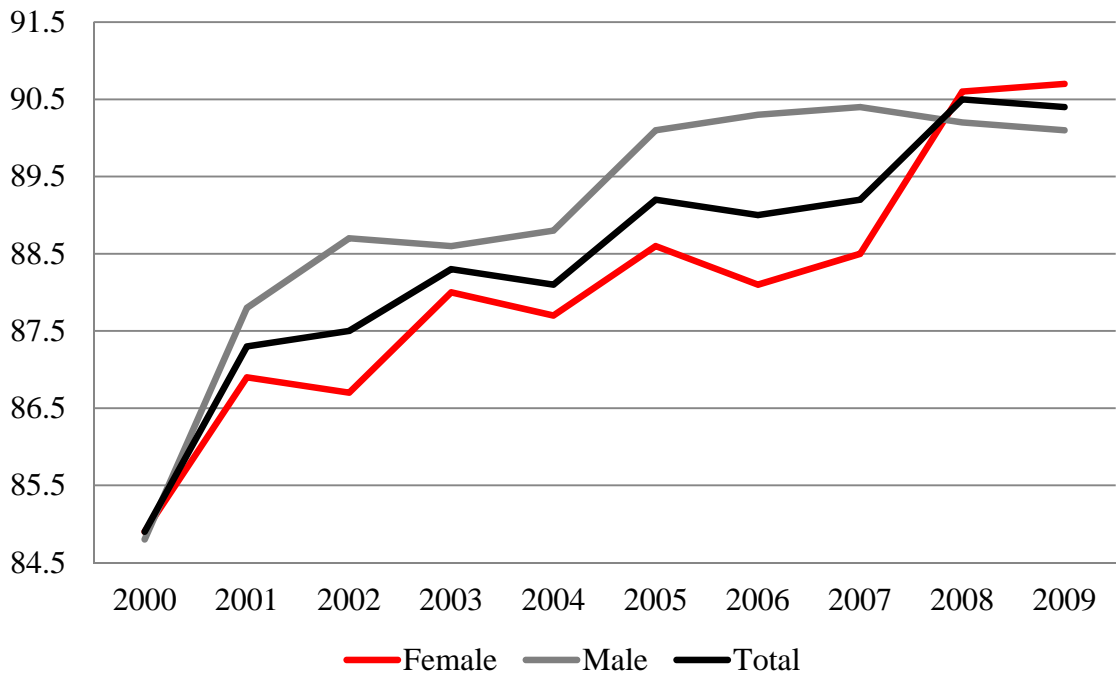


Table 5
Completion Rates by Gender and Cohort Year

Cohort	Gender	Students		1 Year	2 Years	3 Years	4 Years	5 Years	6 Years
		#	%						
2000	Female	2542	60.5		1.1	3.2	53.8	75.8	78.4
	Male	1650	39.3		0.2	1.5	36.2	69.6	75.6
2001	Female	2640	59.3		0.6	2.9	56.6	78.1	81.1
	Male	1810	40.6		0.2	1.5	36.2	69.6	75.6
2002	Female	2559	59.8		1.0	3.7	58.3	77.6	80.3
	Male	1713	40.0		0.8	2.2	43.3	75.1	79.7
2003	Female	3089	59.9		0.9	3.2	57.2	78.8	81.6
	Male	2004	38.9		0.5	2.3	42.0	73.8	79.6
2004	Female	2726	60.6		1.1	3.3	59.4	80.2	82.5
	Male	1773	39.4		0.2	1.6	44.7	74.5	80.1
2005	Female	2811	60.4		0.7	3.0	60.7	81.1	84.3
	Male	1843	39.6		0.5	2.1	47.1	76.8	81.6
2006	Female	3160	62.5	0.1	0.8	3.3	59.2	80.7	
	Male	1898	37.5		0.5	2.6	48.6	77.1	
2007	Female	2935	62.8		0.9	3.3	62.2		
	Male	1733	37.1		0.6	2.3	50.0		
2008	Female	3011	63.0	0.1	1.0	3.9			
	Male	1765	36.9		0.3	2.2			
2009	Female	2860	61.2		0.6				
	Male	1813	38.8		0.7				
2010	Female	2886	61.8						
	Male	1781	38.2	0.1					

Table 6
Completion Averages By Year & Gender and Yearly Trends

	Four Year (%)*		Five Year (%) **		Six Year (%) ***	
	3 Year	6 Year	3 Year	6 Year	3 Year	6 Year
Female	60.7	59.5	80.7	79.4	82.8	81.4
Male	48.6	46.0	76.1	74.5	81.9	78.6
Total	56.1	54.2	78.9	77.5	81.9	80.3

* Cohorts: 2002 – 2007; ** Cohorts: 2001 – 2006; *** Cohorts: 2000 – 2005

Table 7
Retention Rates by Race/Ethnicity and Cohort Year

Cohort	Race/Ethnicity	Students		Fall	Fall	Fall	Fall	Fall	Fall
		#	%	Year 2	Year 3	Year 4	Year 5	Year 6	Year 7
2000	Asian	182	4.3	90.7	84.6	83.0	78.0	78.0	78.0
	Black/African-American	264	6.3	95.8	83.7	78.8	75.0	73.5	75.4
	Hispanic	66	1.6	89.4	83.3	83.3	75.8	77.3	77.3
	American Indian	4	0.1	75.0	75.0	75.0	75.0	75.0	75.0
	Multi-Racial	106	2.5	88.7	85.8	84.9	81.1	86.8	85.8
	Native Hawaiian - Pacific Islander	0	0.0	0.0	0.0	0.0	0.0	0.0	0.0
	White	3,472	82.6	91.3	84.9	82.3	79.8	79.4	79.8
	Not Reported	109	2.6	90.8	88.1	86.2	84.4	84.4	84.4
2001	Asian	218	4.9	94.0	88.5	83.9	81.2	79.8	79.4
	Black/African-American	201	4.5	96.5	88.6	83.6	77.6	76.6	79.6
	Hispanic	67	1.5	91.0	85.1	77.6	76.1	76.1	74.6
	American Indian	5	0.1	100.0	80.0	60.0	60.0	60.0	80.0
	Multi-Racial	67	1.5	92.5	83.6	82.1	77.6	76.1	74.6
	Native Hawaiian - Pacific Islander	0	0.0	0.0	0.0	0.0	0.0	0.0	0.0
	White	3,703	83.1	92.8	87.3	84.4	81.3	80.7	81.4
	Not Reported	193	4.3	94.8	86.0	85.5	81.9	81.3	80.3
2002	Asian	212	5.0	93.4	86.8	84.0	82.5	78.8	80.2
	Black/African-American	216	5.0	95.4	85.2	79.6	72.7	72.2	72.2
	Hispanic	75	1.8	96.0	94.7	90.7	85.3	86.7	86.7
	American Indian	6	0.1	83.3	100.0	83.3	83.3	83.3	83.3
	Multi-Racial	73	1.7	93.2	86.3	82.2	83.6	79.5	79.5
	Native Hawaiian - Pacific Islander	0	0.0	0.0	0.0	0.0	0.0	0.0	0.0
	White	3,479	81.3	93.4	87.8	85.7	83.1	82.4	83.3
	Not Reported	220	5.1	89.5	83.2	81.4	77.3	75.5	75.0
2003	Asian	278	5.4	96.0	88.5	84.5	82.4	79.1	78.8
	Black/African-American	269	5.2	94.1	87.4	82.5	75.5	77.3	76.6
	Hispanic	106	2.1	92.5	86.8	85.8	83.0	79.2	79.2
	American Indian	6	0.1	66.7	50.0	50.0	50.0	50.0	50.0
	Multi-Racial	125	2.4	91.2	84.0	82.4	80.0	80.8	80.8
	Native Hawaiian - Pacific Islander	0	0.0	0.0	0.0	0.0	0.0	0.0	0.0
	White	4,319	83.8	93.5	88.6	86.0	83.4	82.9	83.8
	Not Reported	53	1.0	86.8	86.8	77.4	75.5	81.1	81.1
2004	Asian	262	5.8	94.7	88.5	85.1	80.9	79.8	81.3
	Black/African-American	211	4.7	93.8	87.7	85.3	81.0	81.0	84.8
	Hispanic	71	1.6	98.6	95.8	95.8	87.3	87.3	87.3
	American Indian	10	0.2	100.0	100.0	100.0	100.0	100.0	90.0
	Multi-Racial	145	3.2	93.8	86.9	82.1	78.6	80.0	80.0
	Native Hawaiian - Pacific Islander	0	0.0	0.0	0.0	0.0	0.0	0.0	0.0
	White	3,671	81.6	93.3	87.8	85.5	83.0	83.2	83.2
	Not Reported	130	2.9	96.2	93.1	88.5	83.1	87.7	87.7

Table 7 (Continued)
Retention Rates by Race/Ethnicity and Cohort Year

Cohort	Race/Ethnicity	Students		Fall	Fall	Fall	Fall	Fall	Fall
		#	%	Year 2	Year 3	Year 4	Year 5	Year 6	Year 7
2005	Asian	347	7.5	96.0	89.3	85.0	82.7	83.3	83.6
	Black/African-American	362	7.8	93.9	88.1	87.0	82.0	80.4	80.7
	Hispanic	88	1.9	90.9	81.8	78.4	79.5	75.0	75.0
	American Indian	10	0.2	80.0	60.0	60.0	60.0	60.0	60.0
	Multi-Racial	119	2.6	93.3	89.9	87.4	86.6	85.7	84.9
	Native Hawaiian - Pacific Islander	0	0.0	0.0	0.0	0.0	0.0	0.0	0.0
	White	3,722	80.0	94.2	89.5	87.6	85.5	85.0	85.4
	Not Reported	6	0.1	83.3	83.3	83.3	66.7	66.7	66.7
2006	Asian	366	7.2	94.3	88.3	88.8	81.7	83.1	-
	Black/African-American	379	7.5	94.2	87.9	85.0	79.2	80.5	-
	Hispanic	126	2.5	94.4	89.7	88.1	84.9	84.9	-
	American Indian	18	0.4	94.4	83.3	88.9	88.9	88.9	-
	Multi-Racial	126	2.5	92.1	86.5	82.5	81.7	79.4	-
	Native Hawaiian - Pacific Islander	0	0.0	0.0	0.0	0.0	0.0	0.0	-
	White	4,023	79.5	93.0	89.1	87.3	84.6	84.2	-
	Not Reported	21	0.4	100.0	100.0	90.5	76.2	81.0	-
2007	Asian	383	8.2	96.6	91.1	90.3	84.1		-
	Black/African-American	314	6.7	91.4	86.6	83.8	79.6		-
	Hispanic	102	2.2	96.1	90.2	89.2	83.3		-
	American Indian	8	0.2	87.5	75.0	75.0	62.5		-
	Multi-Racial	117	2.5	94.0	89.7	87.2	82.9		-
	Native Hawaiian - Pacific Islander	0	0.0	0.0	0.0	0.0	0.0		-
	White	3,748	80.2	93.4	89.2	87.8	84.8		-
	Not Reported	3	0.1	66.7	33.3	66.7	66.7		-
2008	Asian	373	7.8	96.2	92.8	89.5			
	Black/African-American	362	7.6	96.1	92.0	88.4			
	Hispanic	151	3.2	94.0	88.1	86.1			
	American Indian	8	0.2	100.0	100.0	100.0			
	Multi-Racial	115	2.4	93.0	92.2	82.6			
	Native Hawaiian - Pacific Islander	0	0.0	0.0	0.0	0.0			
	White	3,765	78.8	94.2	90.1	87.9			
	Not Reported	4	0.1	100.0	100.0	100.0			
2009	Asian	409	8.7	96.3	91.7				
	Black/African-American	353	7.6	97.5	95.2				
	Hispanic	162	3.5	96.3	91.4				
	American Indian	9	0.2	88.9	66.7				
	Multi-Racial	37	0.8	97.3	89.2				
	Native Hawaiian - Pacific Islander	3	0.1	100.0	100.0				
	White	3,615	77.3	93.9	89.8				
	Not Reported	87	1.9	92.0	89.7				

Table 7 (Continued)
Retention Rates by Race/Ethnicity and Cohort Year

Cohort	Race/Ethnicity	Students		Fall	Fall	Fall	Fall	Fall	Fall
		#	%	Year 2	Year 3	Year 4	Year 5	Year 6	Year 7
2010	Asian	445	9.5	96.6					
	Black/African-American	343	7.3	92.7					
	Hispanic	199	4.3	97.0					
	American Indian	4	0.1	100.0					
	Multi-Racial	150	3.2	89.3					
	Native Hawaiian - Pacific Islander	7	0.1	85.7					
	White	3,348	71.7	94.4					
	Not Reported	171	3.7	93.0					

Table 8
Retention Averages By Year & Race/Ethnicity and Yearly Trends

Average	Retention to 2nd Year*			Retention to 3rd Year**		
	3 Year	5 Year	10 Year	3 Year	5 Year	10 Year
Asian	96.4	96.0	95.4	91.9	90.6	89.0
Black/African-American	95.4	94.4	94.6	91.3	90.0	88.2
Hispanic	95.8	95.6	94.7	89.9	88.2	88.7
American Indian	96.3	94.2	90.1	80.6	77.0	79.0
Multi-Racial	93.2	93.1	93.0	90.4	90.4	87.4
Native Hawaiian - Pacific Islander***	92.9	92.9	92.9	100.0	100.0	100.0
White	94.2	93.8	93.6	89.7	89.5	88.4
Not Reported	95.0	90.3	90.2	74.3	81.3	84.4
Total	94.4	94.0	93.8	90.0	89.7	88.4

* Cohorts: 2001 – 2010; ** Cohorts: 2000 – 2009; *** Students Only in 2009 & 2010

Table 9
Completion Rates by Race/Ethnicity and Cohort Year

Cohort	Race/Ethnicity	Students		1 Year	2 Years	3 Years	4 Years	5 Years	6 Years
		#	%						
2000	Asian	182	4.3		2.2	3.3	46.7	72.0	75.8
	Black/African-American	264	6.3		0.4	1.5	39.8	63.6	69.3
	Hispanic	66	1.6			1.5	40.9	74.2	75.8
	American Indian	4	0.1			25.0	50.0	75.0	75.0
	Multi-Racial	106	2.5		2.8	5.7	48.1	78.3	84.0
	Native Hawaiian - Pacific Islander	0	0.0						
	White	3,472	82.6		0.6	2.4	47.3	73.8	77.7
	Not Reported	108	2.6		0.9	2.8	54.6	78.7	81.5
2001	Asian	218	4.9	0.5	1.8	4.1	46.8	72.9	76.6
	Black/African-American	201	4.5			1.5	44.3	72.1	76.6
	Hispanic	67	1.5				35.8	67.2	73.1
	American Indian	5	0.1				40.0	60.0	60.0
	Multi-Racial	67	1.5			1.5	47.8	70.1	73.1
	Native Hawaiian - Pacific Islander	0	0.0						
	White	3,703	83.1		0.5	2.6	49.7	75.4	79.2
	Not Reported	193	4.3			2.1	51.3	72.0	77.7
2002	Asian	212	5.0		1.9	3.8	56.6	74.1	77.4
	Black/African-American	216	5.0			1.4	42.1	67.6	69.9
	Hispanic	75	1.8			1.3	60.0	81.3	85.3
	American Indian	6	0.1				33.3	66.7	83.3
	Multi-Racial	73	1.7			5.5	42.5	68.5	75.3
	Native Hawaiian - Pacific Islander	0	0.0						
	White	3,479	81.3		1.0	3.2	52.9	77.7	81.3
	Not Reported	220	5.1		0.5	3.2	49.1	71.4	73.2
2003	Asian	278	5.4		2.5	6.8	55.8	73.0	77.3
	Black/African-American	269	5.2			1.5	43.5	72.1	74.7
	Hispanic	106	2.1			1.9	46.2	71.7	76.4
	American Indian	6	0.1				33.3	50.0	50.0
	Multi-Racial	125	2.4			0.8	48.0	75.2	79.2
	Native Hawaiian - Pacific Islander	0	0.0						
	White	4,319	83.8		0.7	2.8	51.7	77.6	81.7
	Not Reported	53	1.0			3.8	45.3	71.7	79.2
2004	Asian	262	5.8	0.4	1.9	4.6	53.4	73.7	79.0
	Black/African-American	211	4.7		0.5	0.9	41.2	73.9	81.0
	Hispanic	71	1.6			1.4	57.7	83.1	85.9
	American Indian	10	0.2				60.0	90.0	90.0
	Multi-Racial	145	3.2			1.4	53.8	77.2	78.6
	Native Hawaiian - Pacific Islander	0	0.0						
	White	3,671	81.6		0.7	2.7	54.1	78.3	81.7
	Not Reported	130	2.9		0.8	3.8	57.7	82.3	85.4

Table 9 (Continued)
Completion Rates by Race/Ethnicity and Cohort Year

Cohort	Race/Ethnicity	Students		1 Year	2 Years	3 Years	4 Years	5 Years	6 Years
		#	%						
2005	Asian	347	7.5		2.0	4.3	59.4	77.8	82.1
	Black/African-American	362	7.8		0.6	2.5	49.4	74.3	79.6
	Hispanic	88	1.9		1.1	3.4	48.9	69.3	71.6
	American Indian	10	0.2				40.0	50.0	50.0
	Multi-Racial	119	2.6		1.7	4.2	52.9	80.7	84.9
	Native Hawaiian - Pacific Islander	0	0.0						
	White	3,722	80.0		0.5	2.4	55.8	80.4	84.1
	Not Reported	6	0.1				33.3	66.7	66.7
2006	Asian	366	7.2		1.4	6.0	55.7	78.1	
	Black/African-American	379	7.5		0.8	1.6	44.9	73.9	
	Hispanic	126	2.5		0.8	3.2	50.0	81.0	
	American Indian	18	0.4		5.6	11.1	77.8	88.9	
	Multi-Racial	126	2.5			2.4	52.4	73.0	
	Native Hawaiian - Pacific Islander	0	0.0						
	White	4,023	79.5		0.6	2.9	56.5	80.1	
	Not Reported	21	0.4				33.3	76.2	
2007	Asian	383	8.2		1.8	5.5	58.0		
	Black/African-American	314	6.7		0.3	1.0	50.6		
	Hispanic	102	2.2			2.0	55.9		
	American Indian	8	0.2				37.5		
	Multi-Racial	117	2.5		0.9	3.4	53.0		
	Native Hawaiian - Pacific Islander	0	0.0						
	White	3,748	80.2		0.7	2.9	58.5		
	Not Reported	3	0.1				33.3	66.7	
2008	Asian	373	7.8	0.3	1.6	6.2			
	Black/African-American	362	7.6		1.4	3.3			
	Hispanic	151	3.2			0.7			
	American Indian	8	0.2						
	Multi-Racial	115	2.4		0.9	0.9			
	Native Hawaiian - Pacific Islander	0	0.0						
	White	3,765	78.8		0.6	3.2			
	Not Reported	4	0.1						
2009	Asian	409	8.7		1.5				
	Black/African-American	353	7.6						
	Hispanic	162	3.5						
	American Indian	9	0.2						
	Multi-Racial	37	0.8						
	Native Hawaiian - Pacific Islander	3	0.1						
	White	3,615	77.3		0.6				
	Not Reported	87	1.9						

Table 9 (Continued)
Completion Rates by Race/Ethnicity and Cohort Year

Cohort	Race/Ethnicity	Students		1	2	3	4	5	6
		#	%	Year	Years	Years	Years	Years	Years
2010	Asian	445	9.5						
	Black/African-American	343	7.3						
	Hispanic	199	4.3						
	American Indian	4	0.1						
	Multi-Racial	150	3.2						
	Native Hawaiian - Pacific Islander	7	0.1						
	White	3,348	71.7	0.1					
	Not Reported	171	3.7						
	Total	4,667							

Table 10
Completion Averages By Year & Race/Ethnicity and Yearly Trends

Average	Four Year (%)*		Five Year (%)**		Six Year (%)***	
	3 Year	6 Year	3 Year	3 Year	6 Year	3 Year
Asian	57.7	56.5	76.5	74.9	79.5	78.0
Black/African-American	48.3	45.3	74.0	72.3	78.4	75.2
Hispanic	51.6	53.1	77.8	75.6	78.0	78.0
American Indian	51.8	47.0	76.3	67.6	63.3	68.1
Multi-Racial	52.8	50.4	77.0	74.1	80.9	79.2
Native Hawaiian - Pacific Islander***	–	–	–	–	–	–
White	56.9	54.9	79.6	78.3	82.5	81.0
Not Reported	44.4	47.6	75.1	73.4	77.1	77.3
Total	56.1	54.2	78.9	77.5	77.1	77.3

* Cohorts: 2002 – 2007; ** Cohorts: 2001 – 2006; *** Cohorts: 2000 – 2005

Table 11
Retention Rates by Residency and Cohort Year

Cohort	Residency	# of Students	% of Students	Fall Year 2	Fall Year 3	Fall Year 4	Fall Year 5	Fall Year 6	Fall Year 7
2000	Resident	3,753	89.3	92.1	85.2	82.5	79.7	79.3	79.7
	Non-Resident	449	10.7	86.0	82.2	80.8	78.0	78.8	79.5
2001	Resident	3,855	86.6	93.7	88.0	84.9	81.6	80.8	81.4
	Non-Resident	599	13.4	89.1	82.5	80.0	77.1	77.5	78.3
2002	Resident	3,660	85.5	93.9	88.0	85.8	82.9	82.0	82.8
	Non-Resident	621	14.5	90.0	84.7	80.5	78.7	77.8	78.3
2003	Resident	4,374	84.8	94.1	88.8	86.0	83.2	82.6	83.2
	Non-Resident	782	15.2	89.9	85.2	82.7	79.9	80.4	81.5
2004	Resident	3,761	83.6	94.2	88.8	86.2	83.2	83.8	83.8
	Non-Resident	739	16.4	90.5	84.6	82.3	80.2	79.4	80.4
2005	Resident	4,068	87.4	94.6	89.7	87.5	85.1	84.6	84.8
	Non-Resident	586	12.6	91.0	85.3	84.6	82.8	82.1	83.3
2006	Resident	4,306	85.1	94.2	90.2	88.4	85.3	85.0	
	Non-Resident	753	14.9	87.9	81.5	80.2	76.0	77.0	
2007	Resident	3,928	84.0	94.5	90.4	89.0	85.5		
	Non-Resident	747	16.0	89.0	82.9	81.0	77.9		
2008	Resident	4,068	85.1	95.1	91.5	88.8			
	Non-Resident	710	14.9	90.6	84.2	82.4			
2009	Resident	4,109	87.9	95.1	91.4				
	Non-Resident	566	12.1	89.6	83.2				
2010	Resident	4,081	87.4	95.0					
	Non-Resident	586	12.6	89.8					

Table 12
Retention Averages By Year & Residency and Yearly Trends

	Retention to 2nd Year*			Retention to 3rd Year**		
	<i>3 Year</i>	<i>5 Year</i>	<i>10 Year</i>	<i>3 Year</i>	<i>5 Year</i>	<i>10 Year</i>
Resident	95.1	94.8	94.4	91.1	90.6	89.2
Non-Resident	90.0	89.4	89.7	83.4	83.4	83.6
Total	94.4	94.0	93.8	90.0	89.7	88.4

* Cohorts: 2001 – 2010; ** Cohorts: 2000 – 2009

Figure 5
Freshmen to Sophomore Retention Rates by Residency and Cohort Year

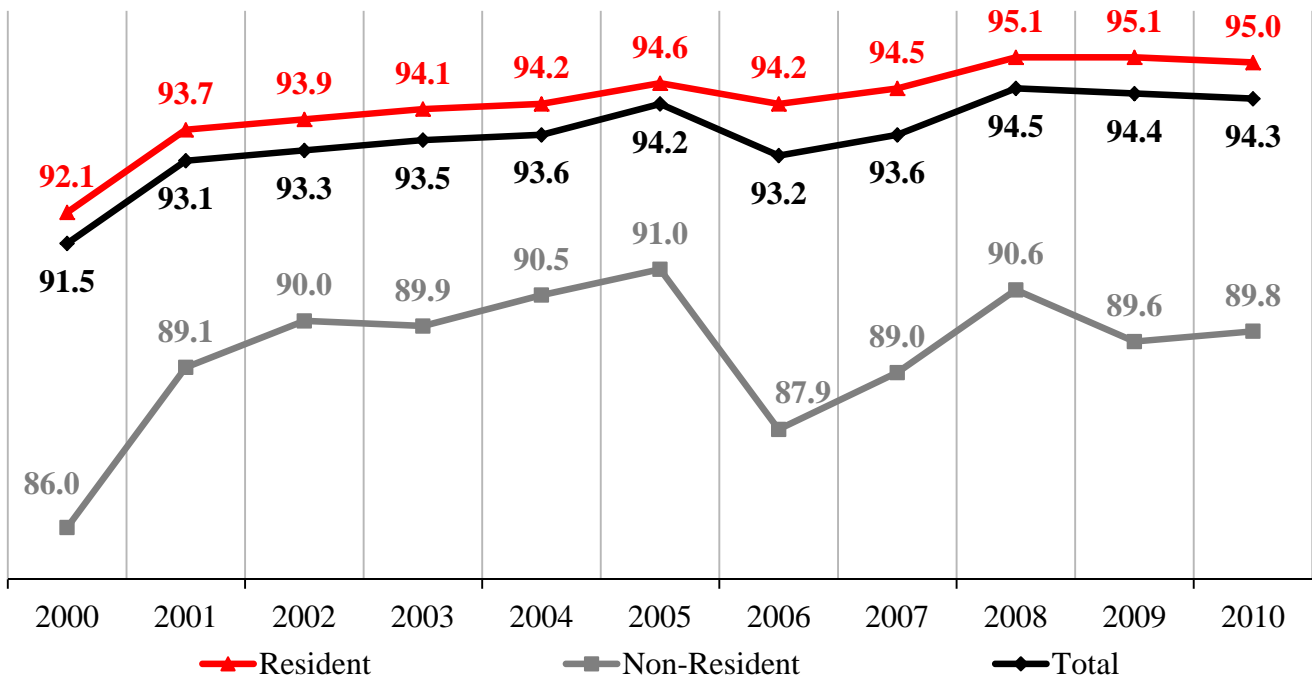


Figure 6
Sophomore to Junior Retention Rates by Residency and Cohort Year

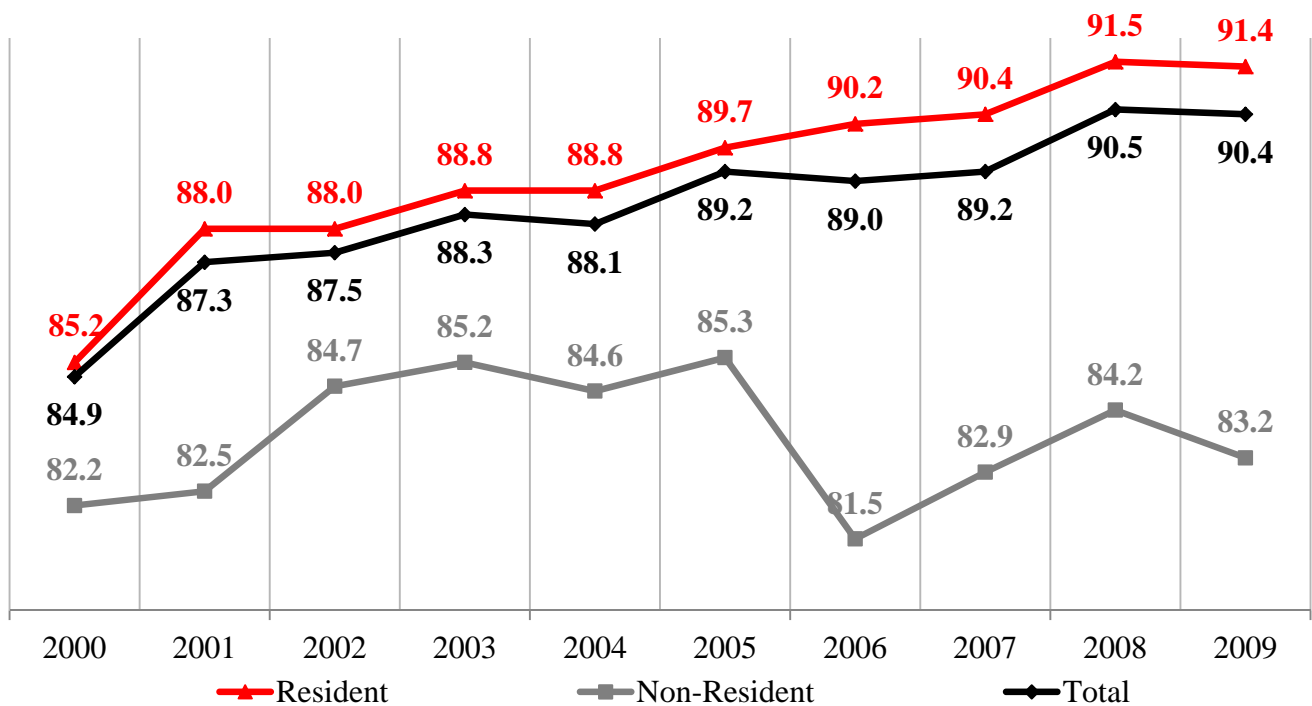


Table 13
Completion Rates by Residency and Cohort Year

Cohort	Residency	# of Students	% of Students	2 Years	3 Years	4 Years	5 Years	6 Years
2000	Resident	3,753	89.3	0.8	2.6	46.1	72.9	77.1
	Non-Resident	449	10.7	0.2	1.8	53.7	76.6	78.8
2001	Resident	3,855	86.6	0.6	2.7	47.9	74.8	78.8
	Non-Resident	599	13.4	0.2	1.3	57.3	75.0	78.1
2002	Resident	3,660	85.5	1.0	3.2	51.6	76.9	80.5
	Non-Resident	621	14.5	0.6	2.4	56.2	74.7	77.8
2003	Resident	4,374	84.8	0.8	3.1	50.2	76.6	80.8
	Non-Resident	782	15.2	0.1	1.4	56.6	78.3	80.9
2004	Resident	3,761	83.6	0.8	2.8	52.4	78.1	82.0
	Non-Resident	739	16.4	0.5	2.0	59.5	77.4	79.3
2005	Resident	4,068	87.4	0.7	2.7	54.3	79.2	83.3
	Non-Resident	586	12.6	0.5	2.2	62.1	80.9	82.9
2006	Resident	4,306	85.1	0.8	3.3	54.8	80.1	
	Non-Resident	753	14.9	0.1	1.5	58.0	75.0	
2007	Resident	3,928	84.0	0.9	3.2	57.1		
	Non-Resident	747	16.0	0.3	1.7	60.9		
2008	Resident	4,068	85.1	0.8	3.6			
	Non-Resident	710	14.9	0.4	1.7			
2009	Resident	4,109	87.9	0.7				
	Non-Resident	566	12.1	0.2				
2010	Resident	4,081	87.4					
	Non-Resident	586	12.6					

Table 14
Completion Averages By Year & Residency and Yearly Trends

<i>Average</i>	Four Year (%)*		Five Year (%)**		Six Year (%)***	
	<i>3 Year</i>	<i>6 Year</i>	<i>3 Year</i>	<i>6 Year</i>	<i>3 Year</i>	<i>6 Year</i>
Resident	55.4	53.4	79.1	77.6	82.0	80.4
Non-Resident	60.3	58.9	77.8	76.9	81.0	79.6
Total	56.1	54.2	78.9	77.5	81.9	80.3

* Cohorts: 2002 – 2007; ** Cohorts: 2001 – 2006; *** Cohorts: 2000 – 2005

Table 14
Retention Averages by Hope Scholarship Receipt in 1st Term
Subclass: Residency

Cohort	Hope Status	# of Students	% of Students	Fall Year 2	Fall Year 3	Fall Year 4	Fall Year 5	Fall Year 6	Fall Year 7
2000	Hope								
	<i>Resident</i>	3458	82.29	91.84	84.56	82.39	79.96	79.67	80.25
	<i>Non-Resident</i>	4	0.10	100.00	100.00	100.00	100.00	100.00	100.00
	No Hope								
	<i>Resident</i>	295	7.02	91.53	80.68	77.63	74.58	74.58	73.22
	<i>Non-Resident</i>	445	10.59	85.62	80.45	80.00	77.30	78.65	79.33
2001	Hope								
	<i>Resident</i>	3614	81.14	93.83	87.47	84.98	81.88	81.38	81.88
	<i>Non-Resident</i>	0	0.00	-	-	-	-	-	-
	No Hope								
	<i>Resident</i>	241	5.41	87.97	82.16	78.84	75.52	71.78	73.86
	<i>Non-Resident</i>	599	13.45	89.15	81.47	79.63	76.79	77.46	78.30
2002	Hope								
	<i>Resident</i>	3355	78.37	93.89	87.66	85.84	83.19	82.50	83.28
	<i>Non-Resident</i>	4	0.09	100.00	100.00	75.00	75.00	75.00	75.00
	No Hope								
	<i>Resident</i>	305	7.12	90.16	84.92	81.31	78.69	76.39	77.70
	<i>Non-Resident</i>	617	14.41	89.79	83.31	80.39	78.44	77.80	78.28
2003	Hope								
	<i>Resident</i>	4086	79.25	94.15	88.50	85.90	83.75	83.06	83.77
	<i>Non-Resident</i>	1	0.02	100.00	100.00	100.00	100.00	100.00	100.00
	No Hope								
	<i>Resident</i>	288	5.59	91.32	81.94	78.82	75.35	75.35	75.35
	<i>Non-Resident</i>	781	15.15	89.63	84.25	82.33	79.90	80.41	81.43
2004	Hope								
	<i>Resident</i>	3491	77.58	94.19	88.31	86.36	83.56	84.10	84.27
	<i>Non-Resident</i>	1	0.02	100.00	100.00	100.00	100.00	100.00	100.00
	No Hope								
	<i>Resident</i>	270	6.00	89.63	84.44	81.48	78.15	79.26	78.15
	<i>Non-Resident</i>	738	16.40	90.38	83.47	81.57	80.08	79.27	80.35
2005	Hope								
	<i>Resident</i>	3626	77.91	94.98	89.82	87.92	85.82	85.38	85.49
	<i>Non-Resident</i>	3	0.06	100.00	100.00	100.00	66.67	100.00	100.00
	No Hope								
	<i>Resident</i>	442	9.50	88.91	83.94	81.90	79.19	78.05	79.19
	<i>Non-Resident</i>	583	12.53	90.91	84.22	84.22	82.85	81.99	83.19

Retention and Completion Summary 19

Cohort	Hope Status	# of Students	% of Students	Fall Year 2	Fall Year 3	Fall Year 4	Fall Year 5	Fall Year 6	Fall Year 7
2006	Hope								
	<i>Resident</i>	3851	76.12	94.44	90.08	88.47	85.80	85.59	82.68
	<i>Non-Resident</i>	2	0.04	100.00	100.00	100.00	100.00	100.00	100.00
	No Hope								
	<i>Resident</i>	455	8.99	90.11	86.15	84.18	80.22	79.78	75.82
	<i>Non-Resident</i>	751	14.84	87.88	81.23	79.76	75.77	76.96	75.63
2007	Hope								
	<i>Resident</i>	3425	73.26	95.04	90.98	90.13	87.15	72.82	72.82
	<i>Non-Resident</i>	0	0.00	-	-	-	-	-	-
	No Hope								
	<i>Resident</i>	503	10.76	89.26	81.31	79.52	75.15	58.65	58.65
	<i>Non-Resident</i>	747	15.98	89.02	82.33	80.72	77.78	69.88	69.88
2008	Hope								
	<i>Resident</i>	3714	77.73	95.13	91.25	89.18	8.00	8.00	8.00
	<i>Non-Resident</i>	5	0.10	100.00	100.00	100.00	0.00	0.00	0.00
	No Hope								
	<i>Resident</i>	354	7.41	93.22	89.55	85.59	3.95	3.95	3.95
	<i>Non-Resident</i>	705	14.76	90.50	82.98	82.27	6.81	6.81	6.81
2009	Hope								
	<i>Resident</i>	3701	79.17	95.27	91.92	0.70	0.70	0.70	0.70
	<i>Non-Resident</i>	4	0.09	50.00	50.00	0.00	0.00	0.00	0.00
	No Hope								
	<i>Resident</i>	408	8.73	93.14	86.76	1.23	1.23	1.23	1.23
	<i>Non-Resident</i>	562	12.02	89.86	83.45	0.18	0.18	0.18	0.18
2010	Hope								
	<i>Resident</i>	3718	79.67	95.10	0.08	0.08	0.08	0.08	0.08
	<i>Non-Resident</i>	6	0.13	100.00	0.00	0.00	0.00	0.00	0.00
	No Hope								
	<i>Resident</i>	363	7.78	93.94	0.00	0.00	0.00	0.00	0.00
	<i>Non-Resident</i>	580	12.43	89.66	0.00	0.00	0.00	0.00	0.00

Table 15
Completion Averages by Hope Scholarship Receipt in 1st Term
Subclass: Residency

Cohort	Hope Status	# of Students	% of Students	2 Year	3 Year	4 Year	5 Year	6 Year
2000	Hope							
	<i>Resident</i>	3458	82.29	0.1	1.9	38.6	71.4	76.8
	<i>Non-Resident</i>	4	0.10	0.0	0.0	25.0	100.0	100.0
	No Hope							
	<i>Resident</i>	295	7.02	0.3	1.4	33.9	63.4	70.8
	<i>Non-Resident</i>	445	10.59	0.0	1.1	48.1	75.1	78.4
2001	Hope							
	<i>Resident</i>	3614	81.14	0.1	1.7	41.8	72.9	78.7
	<i>Non-Resident</i>	0	0.00	-	-	-	-	-
	No Hope							
	<i>Resident</i>	241	5.41	0.0	2.1	35.7	62.2	69.7
	<i>Non-Resident</i>	599	13.45	0.0	1.2	49.6	72.5	77.6
2002	Hope							
	<i>Resident</i>	3355	78.37	0.1	2.2	45.5	75.6	80.8
	<i>Non-Resident</i>	4	0.09	0.0	0.0	25.0	75.0	75.0
	No Hope							
	<i>Resident</i>	305	7.12	0.0	2.0	42.0	69.2	73.4
	<i>Non-Resident</i>	617	14.41	0.0	1.3	50.4	73.6	77.3
2003	Hope							
	<i>Resident</i>	4086	79.25	0.1	2.0	43.7	74.9	80.9
	<i>Non-Resident</i>	1	0.02	0.0	0.0	100.0	100.0	100.0
	No Hope							
	<i>Resident</i>	288	5.59	0.0	1.4	35.4	64.2	71.9
	<i>Non-Resident</i>	781	15.15	0.0	0.8	49.0	77.1	80.8
2004	Hope							
	<i>Resident</i>	3491	77.58	0.1	1.9	46.4	76.9	82.0
	<i>Non-Resident</i>	1	0.02	0.0	0.0	100.0	100.0	100.0
	No Hope							
	<i>Resident</i>	270	6.00	0.0	0.4	36.3	68.9	75.6
	<i>Non-Resident</i>	738	16.40	0.0	1.5	54.9	75.3	78.9
2005	Hope							
	<i>Resident</i>	3626	77.91	0.1	1.7	48.8	78.1	83.5
	<i>Non-Resident</i>	3	0.06	0.0	0.0	33.3	66.7	100.0
	No Hope							
	<i>Resident</i>	442	9.50	0.2	1.8	39.8	69.7	76.7
	<i>Non-Resident</i>	583	12.53	0.0	1.5	56.9	79.8	82.5

Cohort	Hope Status	# of Students	% of Students	2 Year	3 Year	4 Year	5 Year	6 Year
2006	Hope							
	<i>Resident</i>	3851	76.12	0.1	2.0	49.4	79.0	82.7
	<i>Non-Resident</i>	2	0.04	0.0	0.0	0.0	100.0	100.0
	No Hope							
	<i>Resident</i>	455	8.99	0.0	2.0	44.8	72.5	75.8
	<i>Non-Resident</i>	751	14.84	0.0	1.1	52.3	73.5	75.6
2007	Hope							
	<i>Resident</i>	3425	73.26	0.1	2.3	52.2	72.8	72.8
	<i>Non-Resident</i>	0	0.00	0.0	0.0	0.0	0.0	0.0
	No Hope							
	<i>Resident</i>	503	10.76	0.0	1.4	41.2	58.6	58.6
	<i>Non-Resident</i>	747	15.98	0.0	1.1	56.2	69.9	69.9
2008	Hope							
	<i>Resident</i>	3714	77.73	0.2	2.4	8.0	8.0	8.0
	<i>Non-Resident</i>	5	0.10	0.0	0.0	0.0	0.0	0.0
	No Hope							
	<i>Resident</i>	354	7.41	0.0	1.4	4.0	4.0	4.0
	<i>Non-Resident</i>	705	14.76	0.0	1.4	6.8	6.8	6.8
2009	Hope							
	<i>Resident</i>	3701	79.17	0.1	0.7	0.7	0.7	0.7
	<i>Non-Resident</i>	4	0.09	0.0	0.0	0.0	0.0	0.0
	No Hope							
	<i>Resident</i>	408	8.73	0.2	1.2	1.2	1.2	1.2
	<i>Non-Resident</i>	562	12.02	0.0	0.2	0.2	0.2	0.2
2010	Hope							
	<i>Resident</i>	3718	79.67	0.1	0.1	0.1	0.1	0.1
	<i>Non-Resident</i>	6	0.13	0.0	0.0	0.0	0.0	0.0
	No Hope							
	<i>Resident</i>	363	7.78	0.0	0.0	0.0	0.0	0.0
	<i>Non-Resident</i>	580	12.43	0.0	0.0	0.0	0.0	0.0

Table 15
Retention Averages by Hope Scholarship Receipt in 2nd Term

Cohort	Hope Status	# of Students	% of Students	Year 2	Year 3	Year 4	Year 5	Year 6	Year 7
2000	Kept Hope	2592	61.67	100.00	91.86	89.62	87.58	87.31	87.50
	Lost Hope	792	18.84	71.84	66.54	64.65	60.86	60.35	61.99
	Gained Hope	186	4.43	100.00	88.17	84.95	84.95	85.48	83.87
	Never Had Hope	633	15.06	76.46	71.41	70.30	66.82	67.77	68.40
2001	Kept Hope	2800	62.86	100.00	93.25	90.89	87.93	87.75	88.18
	Lost Hope	754	16.93	77.19	71.49	68.30	64.59	63.00	63.79
	Gained Hope	123	2.76	100.00	92.68	88.62	85.37	80.49	82.11
	Never Had Hope	777	17.44	81.34	75.03	73.23	70.40	70.40	71.43
2002	Kept Hope	2649	61.88	100.00	93.96	92.19	89.62	89.13	90.22
	Lost Hope	637	14.88	77.39	70.02	67.66	64.68	63.11	62.32
	Gained Hope	171	3.99	100.00	91.23	90.06	87.72	87.13	88.89
	Never Had Hope	824	19.25	81.31	76.09	72.82	70.63	69.42	70.15
2003	Kept Hope	3222	62.49	100.00	93.85	91.46	89.51	89.04	89.73
	Lost Hope	804	15.59	76.12	71.77	67.91	64.68	63.56	64.05
	Gained Hope	182	3.53	100.00	90.11	91.21	90.66	87.36	89.56
	Never Had Hope	948	18.39	83.86	78.69	76.16	73.31	73.95	74.68
2004	Kept Hope	2438	54.18	100.00	94.42	93.15	90.53	91.80	92.17
	Lost Hope	999	22.20	84.48	77.48	73.87	70.37	69.07	68.77
	Gained Hope	142	3.16	100.00	94.37	95.77	90.85	93.66	93.66
	Never Had Hope	921	20.47	84.04	77.96	75.24	73.94	73.29	73.83
2005	Kept Hope	2540	54.58	100.00	95.67	94.41	92.48	93.19	93.46
	Lost Hope	1045	22.45	85.93	78.66	75.12	72.44	69.38	69.09
	Gained Hope	230	4.94	100.00	95.65	94.78	92.17	92.17	92.17
	Never Had Hope	839	18.03	83.67	77.47	76.64	74.97	73.66	75.09
2006	Kept Hope	2650	52.38	100.00	96.38	95.62	93.85	93.81	-
	Lost Hope	1153	22.79	84.91	78.58	74.76	69.99	69.38	-
	Gained Hope	235	4.65	100.00	94.89	94.47	92.34	92.34	-
	Never Had Hope	1021	20.18	82.76	77.38	75.71	71.40	72.09	-
2007	Kept Hope	2465	52.73	100.00	95.66	95.13	93.10	-	-
	Lost Hope	901	19.27	85.57	81.69	80.02	74.25	-	-
	Gained Hope	260	5.56	100.00	95.38	93.08	91.15	-	-
	Never Had Hope	1049	22.44	83.22	76.07	74.55	70.83	-	-
2008	Kept Hope	2643	55.32	100.00	96.10	94.55	-	-	-
	Lost Hope	1016	21.26	86.61	82.48	78.74	-	-	-
	Gained Hope	171	3.58	100.00	95.32	94.15	-	-	-
	Never Had Hope	948	19.84	85.65	79.64	78.06	-	-	-
2009	Kept Hope	2687	57.48	100.00	96.39	-	-	-	-
	Lost Hope	972	20.79	85.80	82.92	-	-	-	-
	Gained Hope	238	5.09	100.00	92.86	-	-	-	-
	Never Had Hope	778	16.64	84.06	78.41	-	-	-	-

Table 15
4, 5, & 6 Year Completion Averages by Hope Scholarship Receipt in 2nd Term

Cohort	Completed in 4 Years		Hope Status			
	Yes	No	Kept	Lost	Gained	Never
2000	1651	2552	44.37	22.98	43.01	37.76
2001	1895	2559	47.89	22.15	49.59	41.96
2002	1965	2316	50.66	28.26	50.29	43.33
2003	2273	2883	48.82	26.12	49.45	42.19
2004	2123	2377	56.44	24.02	57.75	46.15
2005	2278	2376	59.17	25.26	52.61	46.48
2006	2501	2558	60.87	25.15	60.43	44.66
2007	2416	2259	62.80	25.97	60.77	45.38
2008	359	4419	9.27	5.02	4.68	5.80
2009	32	4643	0.71	0.72	0.84	0.51
2010	3	4664		0.08		

Cohort	Completed in 5 Years		Hope Status			
	Yes	No	Kept	Lost	Gained	Never
2000	2994	1209	79.86	49.49	73.66	62.40
2001	3218	1236	80.21	50.53	73.17	64.48
2002	3206	1075	83.05	52.43	80.70	64.81
2003	3850	1306	81.75	52.24	76.37	69.30
2004	3427	1073	86.87	56.16	85.92	67.97
2005	3607	1047	88.62	55.31	86.96	68.89
2006	3928	1131	90.45	55.77	88.51	66.60
2007	3311	1364	82.64	49.39	80.00	59.20
2008	359	4419	9.27	5.02	4.68	5.80
2009	32	4643	0.71	0.72	0.84	0.51
2010	3	4664		0.08		

Cohort	Completed in 6 Years		Hope Status			
	Yes	No	Kept	Lost	Gained	Never
2000	3217	986	84.80	56.06	82.80	66.51
2001	3479	975	85.79	57.82	78.86	70.01
2002	3414	867	88.26	57.61	83.63	68.69
2003	4146	1010	87.46	59.08	86.81	73.31
2004	3651	849	90.73	64.76	92.25	71.77
2005	3849	805	92.20	65.17	90.43	73.66
2006	4099	960	92.79	62.19	91.49	69.34
2007	3311	1364	82.64	49.39	80.00	59.20
2008	359	4419	9.27	5.02	4.68	5.80
2009	32	4643	0.71	0.72	0.84	0.51
2010	3	4664		0.08		

Table 15
4, 5, & 6 Year Completion Averages by Percentage of College Career with Hope

4 Year Completion		100%		51-99%		50%		1-49%		0%	
		YES	NO	YES	NO	YES	NO	YES	NO	YES	NO
2000	4203	56.08	43.92	52.31	47.69	16.93	83.07	8.02	91.98	41.44	58.56
2001	4454	60.53	39.47	50.53	49.47	17.07	82.93	14.31	85.69	43.60	56.40
2002	4281	58.90	41.10	56.45	43.55	23.84	76.16	11.75	88.25	44.73	55.27
2003	5156	59.29	40.71	55.14	44.86	17.84	82.16	12.64	87.36	44.27	55.73
2004	4500	62.83	37.17	53.79	46.21	26.58	73.42	12.50	87.50	48.59	51.41
2005	4654	63.65	36.35	58.83	41.17	30.92	69.08	14.92	85.08	47.59	52.41
2006	5059	64.61	35.39	60.81	39.19	34.25	65.75	14.45	85.55	45.05	54.95
2007	4675	66.50	33.50	63.13	36.87	34.86	65.14	15.26	84.74	46.46	53.54

5 Year Completion		100%		51-99%		50%		1-49%		0%	
		YES	NO	YES	NO	YES	NO	YES	NO	YES	NO
2000	2552	79.87	20.13	81.44	18.56	66.67	33.33	28.56	71.44	44.59	55.41
2001	2559	73.68	26.32	79.66	20.34	50.00	50.00	31.03	68.97	39.67	60.33
2002	2316	78.26	21.74	81.55	18.45	48.00	52.00	25.09	74.91	41.69	58.31
2003	2883	71.95	28.05	83.38	16.62	46.67	53.33	29.00	71.00	48.28	51.72
2004	2377	75.54	24.46	82.61	17.39	52.50	47.50	29.52	70.48	42.21	57.79
2005	2376	77.57	22.43	82.40	17.60	57.14	42.86	31.32	68.68	43.65	56.35
2006	2558	82.19	17.81	85.10	14.90	68.09	31.91	30.87	69.13	39.59	60.41

6 Year Completion		100%		51-99%		50%		1-49%		0%	
		YES	NO	YES	NO	YES	NO	YES	NO	YES	NO
2000	1209	100.00	0.00	52.99	47.01	35.00	65.00	12.93	87.07	12.64	87.36
2001	1236	100.00	0.00	60.16	39.84	27.47	72.53	15.18	84.82	16.51	83.49
2002	1075	0.00	100.00	65.57	34.43	22.78	77.22	12.75	87.25	12.15	87.85
2003	1306	50.00	50.00	68.71	31.29	28.95	71.05	16.55	83.45	13.69	86.31
2004	1073	-	-	62.50	37.50	30.14	69.86	14.71	85.29	13.69	86.31
2005	1047	100.00	0.00	57.26	42.74	35.21	64.79	17.67	82.33	16.43	83.57